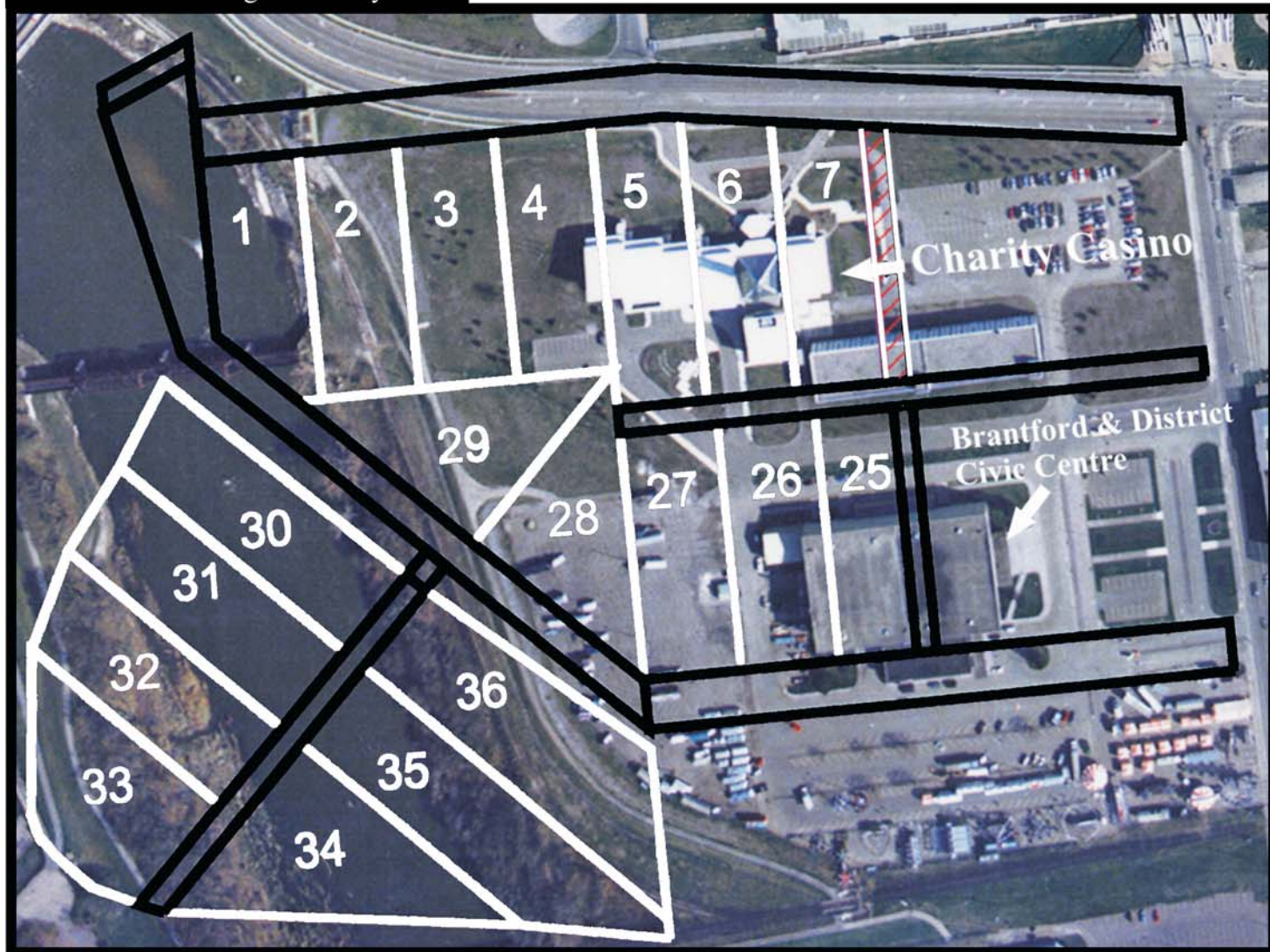




Nathan Gage Patent

Brantford Aerial/Original Survey Lines



- 807 Acres (Town Plot - Brantford)
- Land Claims: 1-7, $\frac{4}{5}$ of Lot 25, 26-36
- Total Claim = 20.3375 Acres
- No Compensation since 1840

Brantford Charity Casino Summary:

- 100% Provincially Owned
- Since 1999 Casino has earned approximately:
- \$800 Million**
- Brantford's 5% of Slots since 1999:
- \$29.4 Million**