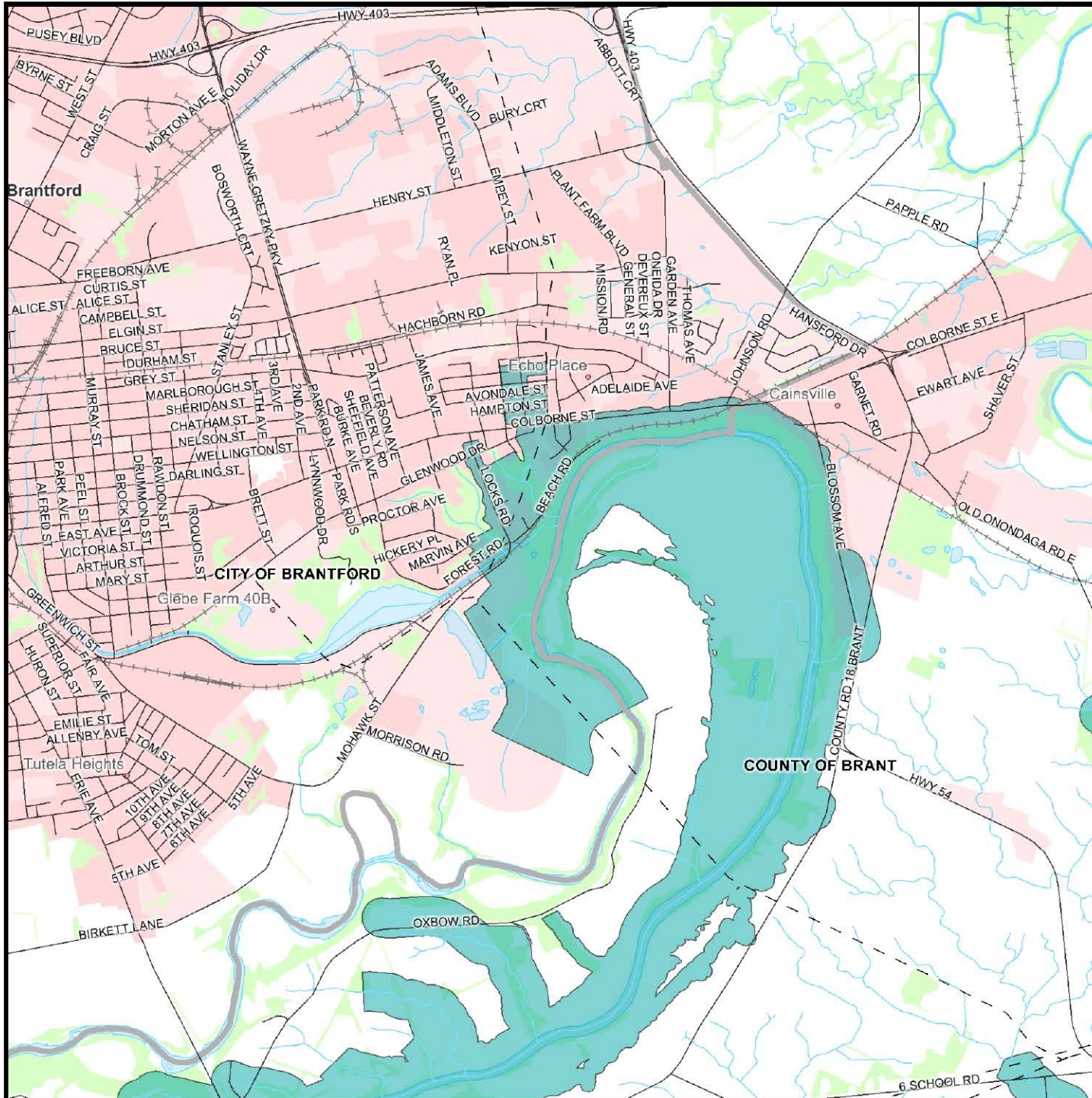




Ohsweken WTP IPZ 2 City

LEGEND

- WATERSHED MASK
- SURFACE WATER INTAKE (MUN)
- WATERSHED BOUNDARY (GRCA)
- UTILITY LINE (NRVIS)
- ROADS-ADDRESSED (MNR)
- RAILWAY (NRVIS)
- MUNICIPAL BOUNDARY (GRCA)
- DRAINAGE-NETWORK (GRCA)
- SURFACE WATER IPZ (MUN)
- IPZ 1
- IPZ 2
- PARKS (GRCA)
- DRAINAGE-POLY (NRVIS)
- WOODED AREA (MNR)
- HEDGEROW
- PLANTATION
- TREED
- BUILT-UP (MNR)
- BUILT-UP PERVIOUS
- BUILT-UP IMPERVIOUS

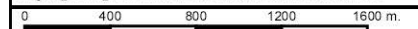


GRCA Disclaimer

This map is for illustrative purposes only. Information contained hereon is not a substitute for professional review or a site survey and is subject to change without notice. The Grand River Conservation Authority takes no responsibility for, nor guarantees, the accuracy of the information contained on this map. Any interpretations or conclusions drawn from this map are the sole responsibility of the user.

The source for each data layer is shown in parentheses in the map legend. For a complete listing of sources and citations go to:

<http://grims.grandriver.ca/docs/SourcesCitations2.htm>



NAD 1983, UTM Zone 17

Scale 1:35,299

